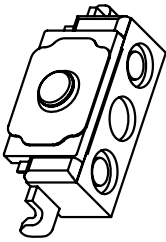
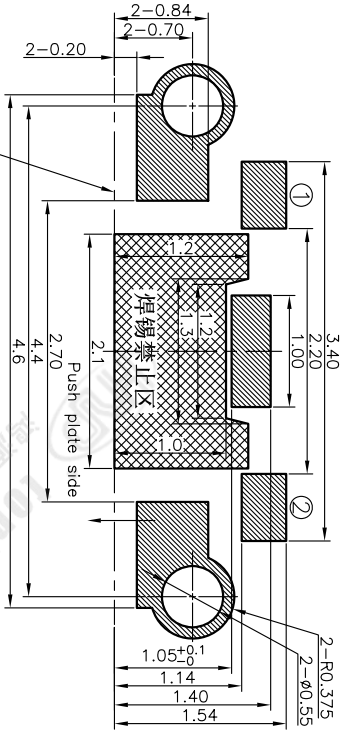
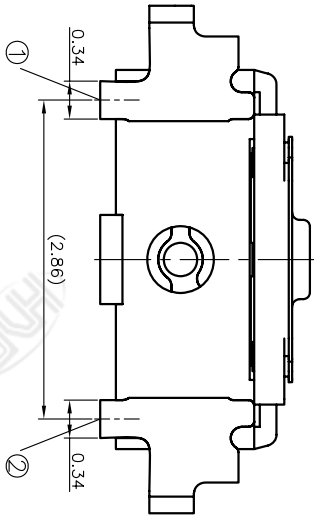
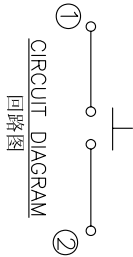
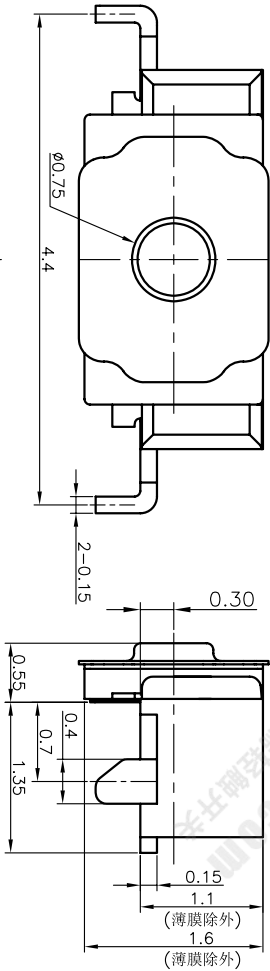
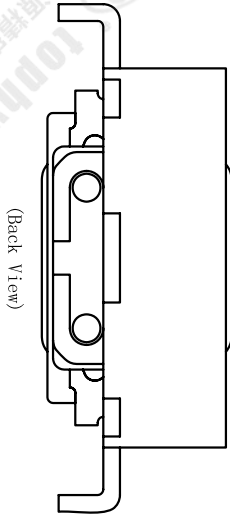
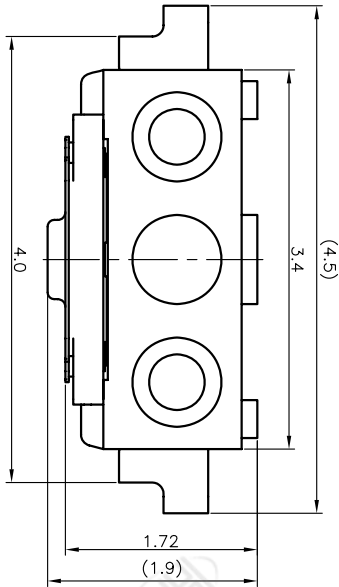


REV	ECN NO.	APPD
A	HC200025	ZO

规格 Specifications

额定负荷 Rating	DC 12V/50mA	
接触电阻 Contact Resistance	500mΩ max.	
绝缘电阻 Insulation resistance	DC100V 60S 100MΩ min.	
抗电强度 Dielectric strength	AC250V(50~60HZ) 60S min.	
操作力 Operation force	160±30gf	240±40gf
寿命试验 Operating Life	200,000 cycles	
行程 Travels	0.11±0.05mm	



RECOMMENDED P.C.B. LAYOUT  
安装尺寸图

Edge of PCB

焊锡禁止区

Push plate side

2.1

2.70

4.4

4.6

2-R0.375

2-φ0.55

1.05±0.1

1.14

1.40

1.54

1.3

2-0.84

2-0.70

2-0.20

3.40

2.20

1.00

2.1

2.70

4.4

4.6

2-R0.375

2-φ0.55

1.05±0.1

1.14

1.40

1.54

1.3

2-0.84

2-0.70

2-0.20

3.40

2.20

1.00

2.1

2.70

4.4

4.6

2-R0.375

2-φ0.55

1.05±0.1

1.14

1.40

1.54

1.3

2-0.84

2-0.70

2-0.20

3.40

2.20

1.00

2.1

2.70

4.4

4.6

2-R0.375

2-φ0.55

1.05±0.1

1.14

1.40

1.54

1.3

2-0.84

2-0.70

2-0.20

3.40

2.20

1.00

2.1

2.70

4.4

4.6

2-R0.375

2-φ0.55

1.05±0.1

1.14

1.40

1.54

1.3

2-0.84

2-0.70

2-0.20

3.40

2.20

1.00

2.1

2.70

4.4

4.6

2-R0.375

2-φ0.55

1.05±0.1

1.14

1.40

1.54

1.3

2-0.84

2-0.70

2-0.20

3.40

2.20

1.00

2.1

2.70

4.4

4.6

2-R0.375

2-φ0.55

1.05±0.1

1.14

1.40

1.54

1.3

2-0.84

2-0.70

2-0.20

3.40

2.20

1.00

2.1

2.70

4.4

4.6

2-R0.375

2-φ0.55

1.05±0.1

1.14

1.40

1.54

1.3

2-0.84

2-0.70

2-0.20

3.40

2.20

1.00

2.1

2.70

4.4

4.6

2-R0.375

2-φ0.55

1.05±0.1

1.14

1.40

1.54

1.3

2-0.84

2-0.70

2-0.20

3.40

2.20

1.00

2.1

2.70

4.4

4.6

2-R0.375

2-φ0.55

1.05±0.1

1.14

1.40

1.54

1.3

2-0.84

2-0.70

2-0.20

3.40

2.20

1.00

2.1

2.70

4.4

4.6

2-R0.375

2-φ0.55

1.05±0.1

1.14

1.40

1.54

1.3

2-0.84

2-0.70

2-0.20

3.40

2.20

1.00

2.1

2.70

4.4

4.6

2-R0.375

2-φ0.55

1.05±0.1

1.14

1.40

1.54

1.3

2-0.84

2-0.70

2-0.20

3.40

2.20

1.00

2.1

2.70

4.4

4.6

2-R0.375

2-φ0.55

1.05±0.1

1.14

1.40

1.54

1.3

2-0.84

2-0.70

2-0.20

3.40

2.20

1.00

2.1

2.70

4.4

4.6

2-R0.375

2-φ0.55

1.05±0.1

1.14

1.40

1.54

1.3

2-0.84

2-0.70

2-0.20

3.40

2.20

1.00

2.1

2.70

4.4

4.6

2-R0.375

2-φ0.55

1.05±0.1

1.14

1.40

1.54

1.3

2-0.84

2-0.70

2-0.20

3.40

2.20

1.00

2.1

2.70

4.4

4.6

2-R0.375

2-φ0.55

1.05±0.1

1.14

1.40

1.54

1.3

2-0.84

2-0.70

2-0.20

3.40

2.20

1.00

2.1

2.70

4.4

4.6

2-R0.375

2-φ0.55

1.05±0.1

1.14

1.40

1.54

1.3

2-0.84

2-0.70

2-0.20

3.40

2.20

1.00

2.1

2.70

4.4

4.6

2-R0.375

2-φ0.55